

WELL-CONNECTED STRATEGIC SURROUNDINGS

Nestled in the core of the well-established 950-acre township of Taman Daiman Jaya, KT Central boasts a strategically advantageous location as a pivotal midpoint of Johor Bahru and Mersing. The upcoming Jalan Kota Tinggi interchange bypass aims to significantly enhance accessibility, and further solidify KT Central's position as a hub of convenience and connectivity for residents and businesses alike.

KT中和商街坐落在占地950英亩的哥打大马花园城镇中心，作为新山和丰盛港的中途站，地理位置优越。未来将建成的哥打丁宜Bypass交通天桥旨在显著提高商街的可达性，并进一步巩固 KT中和商街作为居民和企业的便利及连通枢纽的地位。



MEDICAL

- 1 Kota Tinggi Hospital
- 2 Sultan Ismail Hospital

EDUCATION

- 3 SJKC Pei Hwa
- 4 SJKC Mawai
- 5 Crescendo International College

SHOPPING & GROCERY

- 6 Econsave Taman Daiman Jaya
- 7 The Gaya Garden
- 8 IKEA Tebrau
- 9 Toppen Shopping Centre
- 10 AEON Mall Tebrau City



DAIMAN DEVELOPMENT BERHAD (Reg No. 197201000041(11681-T))
Level 32, Menara Landmark, No.12, Jalan Ngee Heng, 80000
Johor Bahru, Johor Darul Ta'zim, West Malaysia.
T +607-882 8282 F +607-882 8022 E daiman@daiman.com.my

CALL US TODAY

07-882 8282

Daiman Group daimanproperty www.daiman.com.my Taman Daiman Jaya Sales Office

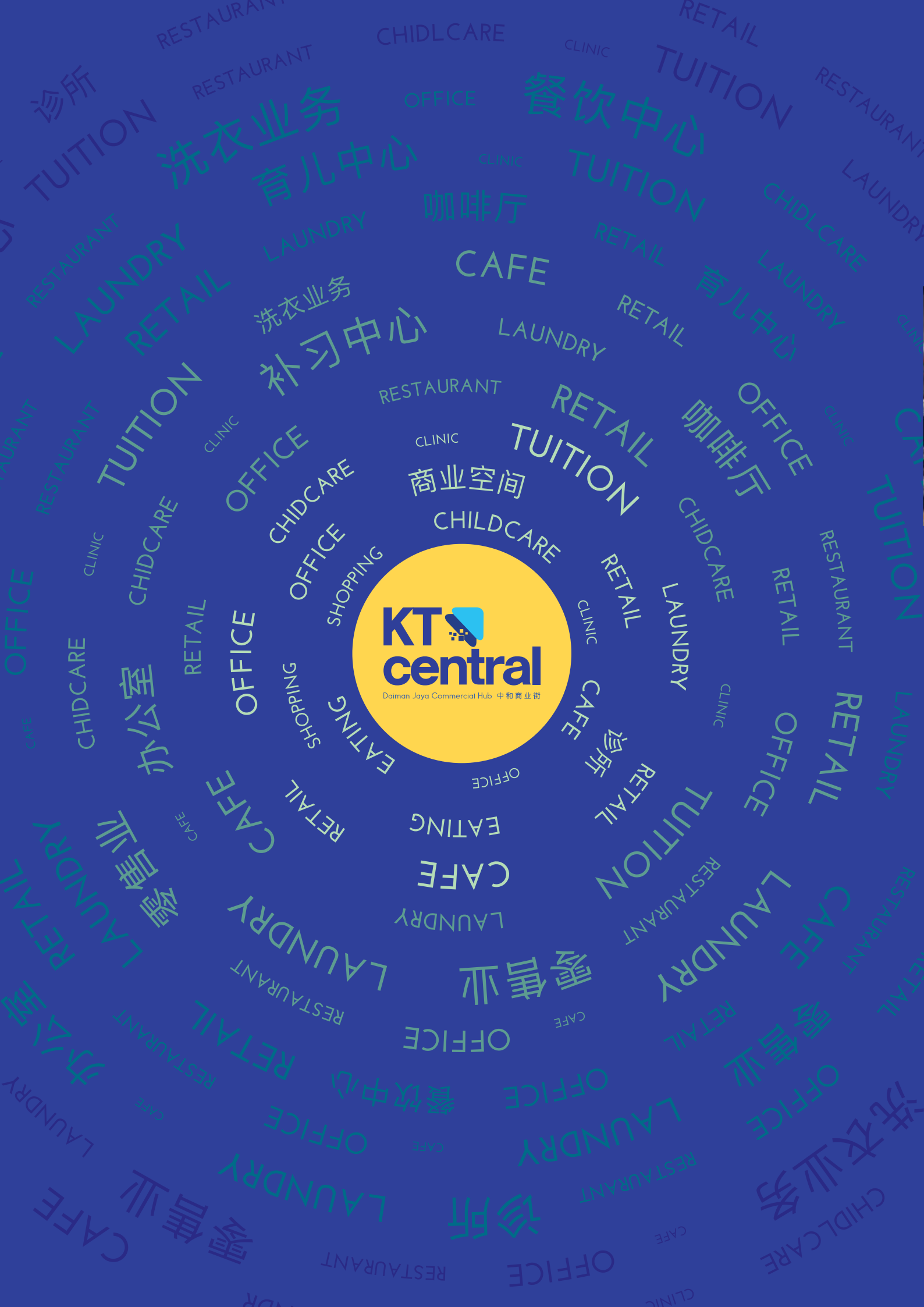
All information, specifications and plans contained herein are subject to amendments as may be required by the authorities or developer's project consultants and cannot form part of an offer or contract. All measurements are approximate and the illustrations are artist's impression only.

KT central

Daiman Jaya Commercial Hub 中和商业街



**WHERE
DIVERSITY
MEETS
EXCELLENCE**



**WELL-PLANNED DESIGN
FOR A LIVELY
BUSINESS ATMOSPHERE**



KT Central is meticulously designed for optimal accessibility, featuring seamless ingress and egress points alongside generous parking facilities. The shoplots are strategically positioned for high visibility, with the added charm of alfresco dining options. A sprawling Central Park provides an inviting space for community gatherings and social events, promising to be a weekend crowd puller. Moreover, the wide roads ensure smooth traffic flow and easy navigation within this dynamic commercial hub.

KT中和商业街(KT Central)经过精心规划，宽阔道路畅通无阻，便利通达，提供充足停车空间，地理位置优越，同时也确保各商业店铺的高曝光度。

DISCOVER THE NEXT BOOMING LIFESTYLE HOTSPOT



Introducing KT Central, the business premise that is designed to cater to your business needs. Business owners, entrepreneurs, and investors stand to benefit from a diverse array of business opportunities and long-term capital appreciation through this new heartbeat of the community.

KT中和商业街 ——为您的业务需求而生。不论您是企业家、创业家还是投资者，这里将为您提供多样的商机，并协助您实现长期资本增值。



First lifestyle hub
in Kota Tinggi



Freehold &
Individual Titles



Featuring
246 shop - offices



Modern façade with
ample parking spaces



Maximum visibility
from main road



Wide range of
business types



Suitable for F&B outlets,
alfresco dining, convenience
stores, and lifestyle
entertainment venues



Upcoming drive-thru
concept, neighbourhood
mall and hypermarket



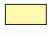
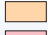
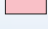
To Mersing / Desaru

FUTURE BYPASS ROAD

To Johor Bahru

PRECISION PLANNING FOR A SPIRITED DAILY LIFESTYLE LANDSCAPE



-  2 Storey & 3 Storey (Corner) - Shop Offices Type A
-  2 Storey & 3 Storey (Corner) - Shop Offices Type B
-  2 Storey & 3 Storey (End & Corner) - Shop Offices Type C



Artist's Impression



大馬集團
DAIMAN GROUP
Since 1972
Our trusted developer for generations

馬發展有限公司
DAIMAN DEVELOPMENT BERHAD
Company No: 197201000041 (11681-T)

Level 32, Menara Landmark,
No. 12, Jalan Ngee Heng,
40000 Johor Bahru,
Johor Darul Takzim, West Malaysia.

07) 225 5888 (Ext: 201) F: (607) 225 5999
www.daiman.com.my

2 STOREY
SHOP OFFICES
TYPE A

双层店铺办公楼
A型

LAND AREA
From 24' x 85'

BUILT-UP
From 3,074 sq.ft.

TOTAL UNITS
40

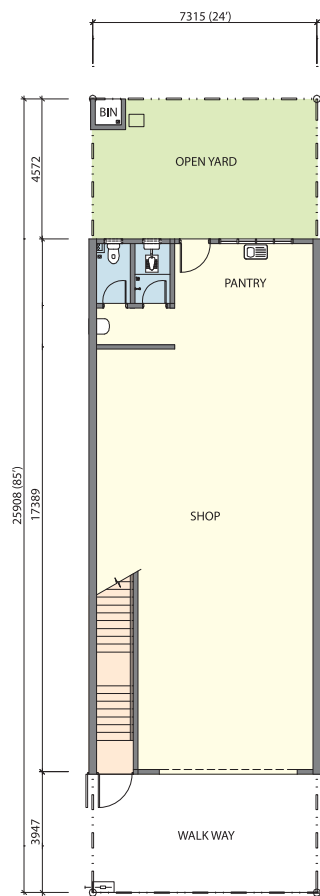
STRUCTURE 结构	Reinforced Concrete Frame 钢筋混凝土结构	
WALL 墙壁	Generally Bricks with Cement Sand Plastering 红砖及抹沙灰	
ROOFING COVERING 屋顶覆盖	Metal Roofing Sheets / Reinforced Concrete Flat Roof 金属屋顶 / 钢筋混凝土屋顶	
ROOF FRAMING 屋顶结构	Lightweight Metal Framing 轻型金属框架	
CEILING 天花板	Skim Coating with Emulsion Painting to Soffit of Concrete Slab 混凝土板片抹灰与乳胶漆 Fibre Cement Ceiling Emulsion Paint 纤维水泥天花板与乳胶漆	
WINDOWS 窗	Aluminium Framed Glass Windows 铝框玻璃窗	
DOORS 门	Generally Plywood Flush Doors, MS Door/s 三夹板门与软钢门 Aluminium Roller Shutter Door/s 铝制卷帘门 Fire Door/s for Staircase (Except Ground Floor) 楼梯防火门 (底层除外)	
IRONMONGERY 锁	Quality Lock Set 优质门锁与配件	
WALL FINISHES 墙面装饰	External Walls 外墙	Weather Resistant Paint 耐候漆
	Internal Plastered Walls 内墙	Emulsion Paint 墙壁乳胶漆
		Ceramic Tiles to 1500mm high to Bathrooms 浴室的瓷砖高度达 1500 毫米
		Paint on Timber & Steel 油漆于木材和钢材上
FLOOR FINISHES 地面饰材	Ceramic Floor Tiles to Bathrooms 浴室地面瓷砖	
	Cement Render to Others 其它地饰为水泥抹灰	
		Intermediate 中间 / End Unit 末端单位
SANITARY AND PLUMBING FITTINGS 卫浴配置	WC - Pedestal 坐厕	2
	WC - Squatting Pan 蹲厕	2
	Wash Basin with Water Tap 洗手盆及水龙头	3
	Shower Head 花洒	2
	Toilet Roll Holder 卫生纸架	4
	Kitchen Sink with Water Tap 厨房洗涤盆及水龙头	2
	Bib Tap 水龙头	5
ELECTRICAL INSTALLATION 电器配置	Lighting Point 电灯插座	17
	13A Power Point 13A电源位	16
	Ceiling Fan Point 天花板风扇位	4
INTERNAL TELEPHONE TRUNKING AND CABLING 室内电话路线	Telephone Point 电话插座	2

2 STOREY SHOP OFFICES **TYPE A**

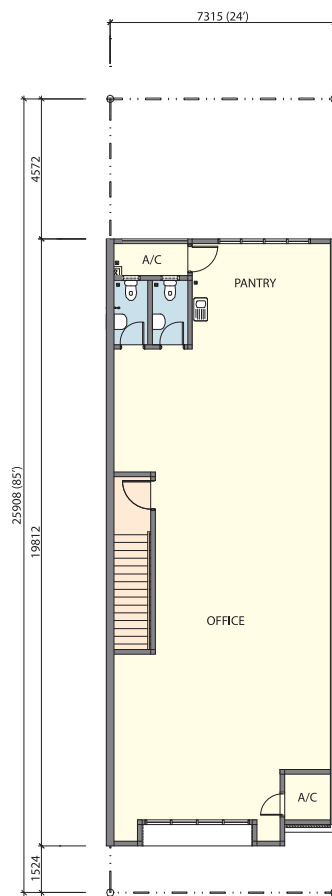
双层店铺办公楼 **A型**



Artist's Impression



Ground Floor



First Floor

Disclaimer: All information, specifications and plans contained herein are subject to amendments as may be required by the authorities or developer's project consultants and cannot form part of an offer or contract. All measurements are approximate and the illustrations are artist's impression only.

3 STOREY
SHOP OFFICES
TYPE A

三层店铺办公楼
A型

LAND AREA

From 2,125 sq.ft.

BUILT-UP

From 4,765 sq.ft.

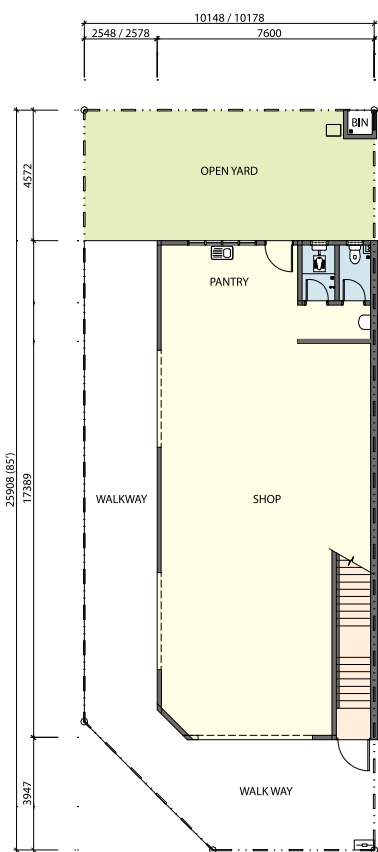
STRUCTURE 结构	Reinforced Concrete Frame 钢筋混凝土结构	
WALL 墙壁	Generally Bricks with Cement Sand Plastering 红砖及抹沙灰	
ROOFING COVERING 屋顶覆盖	Metal Roofing Sheets / Reinforced Concrete Flat Roof 金属屋顶 / 钢筋混凝土屋顶	
ROOF FRAMING 屋顶结构	Lightweight Metal Framing 轻型金属框架	
CEILING 天花板	Skim Coating with Emulsion Painting to Soffit of Concrete Slab 混凝土板片抹灰与乳胶漆 Fibre Cement Ceiling Emulsion Paint 纤维水泥天花板与乳胶漆	
WINDOWS 窗	Aluminium Framed Glass Windows 铝框玻璃窗	
DOORS 门	Generally Plywood Flush Doors, MS Door/s 三夹板门与软钢门 Aluminium Roller Shutter Door/s 铝制卷帘门 Fire Door/s for Staircase (Except Ground Floor) 楼梯防火门 (底层除外)	
IRONMONGERY 锁	Quality Lock Set 优质门锁与配件	
WALL FINISHES 墙面装饰	External Walls 外墙 Internal Plastered Walls 内墙	Weather Resistant Paint 耐候漆 Emulsion Paint 墙壁乳胶漆 Ceramic Tiles to 1500mm high to Bathrooms 浴室的瓷砖高度达 1500 毫米 Paint on Timber & Steel 油漆于木材和钢材上
FLOOR FINISHES 地面饰材	Ceramic Floor Tiles to Bathrooms 浴室地面瓷砖 Cement Render to Others 其它地饰为水泥抹灰	Corner Unit 角头单位
SANITARY AND PLUMBING FITTINGS 卫浴配置	WC - Pedestal 坐厕 WC - Squatting Pan 蹲厕 Wash Basin with Water Tap 洗手盆及水龙头 Shower Head 花洒 Toilet Roll Holder 卫生纸架 Kitchen Sink with Water Tap 厨房洗涤盆及水龙头 Bib Tap 水龙头	5 1 5 3 6 3 7
ELECTRICAL INSTALLATION 电器配置	Lighting Point 电灯插座 13A Power Point 13A电源位 Ceiling Fan Point 天花板风扇位	24 23 6
INTERNAL TELEPHONE TRUNKING AND CABLING 室内电话路线	Telephone Point 电话插座	3

3 STOREY SHOP OFFICES TYPE A

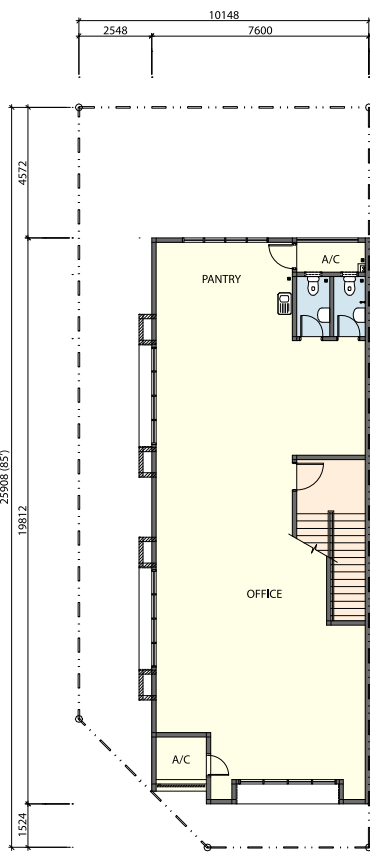
三层店铺办公楼 A型



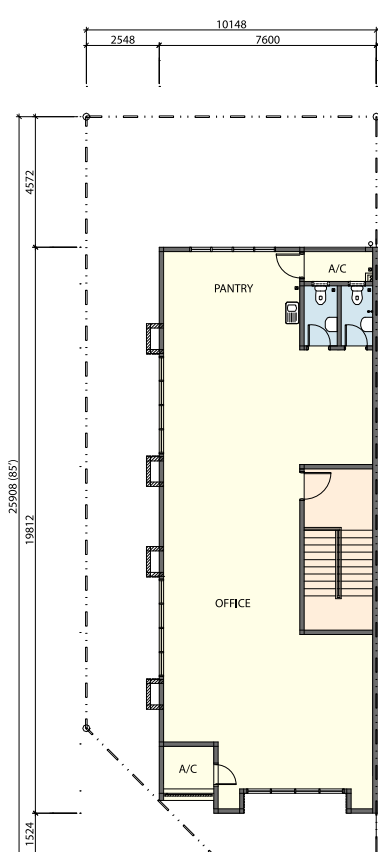
Artist's Impression



Ground Floor



First Floor



Second Floor

Disclaimer: All information, specifications and plans contained herein are subject to amendments as may be required by the authorities or developer's project consultants and cannot form part of an offer or contract. All measurements are approximate and the illustrations are artist's impression only.

2 STOREY
SHOP OFFICES
TYPE B

双层店铺办公楼
B型

LAND AREA

From 34' x 80'

BUILT-UP

From 3,630sq.ft.

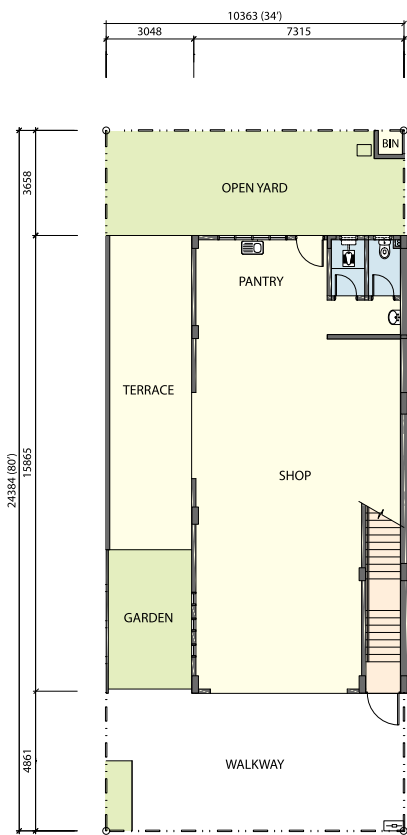
STRUCTURE 结构	Reinforced Concrete Frame 钢筋混凝土结构	
WALL 墙壁	Generally Bricks with Cement Sand Plastering 红砖及抹沙灰	
ROOFING COVERING 屋顶覆盖	Metal Roofing Sheets / Reinforced Concrete Flat Roof 金属屋顶 / 钢筋混凝土屋顶	
ROOF FRAMING 屋顶结构	Lightweight Metal Framing 轻型金属框架	
CEILING 天花板	Skim Coating with Emulsion Painting to Soffit of Concrete Slab 混凝土板片抹灰与乳胶漆 Fibre Cement Ceiling with Emulsion Paint 纤维水泥天花板与乳胶漆	
WINDOWS 窗	Aluminium Framed Glass Windows 铝框玻璃窗	
DOORS 门	Generally Plywood Flush Doors, MS Door/s 三夹板门与软钢门 Aluminium Roller Shutter Door/s 铝制卷帘门 Fire Door/s for Staircase (Except Ground Floor) 楼梯防火门 (底层除外)	
IRONMONGERY 锁	Quality Lock Set 优质门锁与配件	
WALL FINISHES 墙面装饰	External Walls 外墙	Weather Resistant Paint 耐候漆
	Internal Plastered Walls 内墙	Emulsion Paint 墙壁乳胶漆
		Ceramic Tiles to 1500mm high to Bathrooms 浴室的瓷砖高度达 1500 毫米
		Paint on Timber & Steel 油漆于木材和钢材上
FLOOR FINISHES 地面饰材	Ceramic Floor Tiles to Bathrooms 浴室地面瓷砖	
	Cement Render to Others 其它地饰为水泥抹灰	
		Intermediate 中间 / End Unit 末端单位
SANITARY AND PLUMBING FITTINGS	WC - Pedestal 坐厕	3
卫浴配置	WC - Squatting Pan 蹲厕	1
	Wash Basin with Water Tap 洗手盆及水龙头	3
	Shower Head 花洒	2
	Toilet Roll Holder 卫生纸架	4
	Kitchen Sink with Water Tap 厨房洗涤盆及水龙头	2
	Bib Tap 水龙头	5
ELECTRICAL INSTALLATION	Lighting Point 电灯插座	18
电器配置	13A Power Point 13A电源位	16
	Ceiling Fan Point 天花板风扇位	4
INTERNAL TELEPHONE TRUNKING AND CABLING		
室内电话路线	Telephone Point 电话插座	2

2 STOREY SHOP OFFICES TYPE B

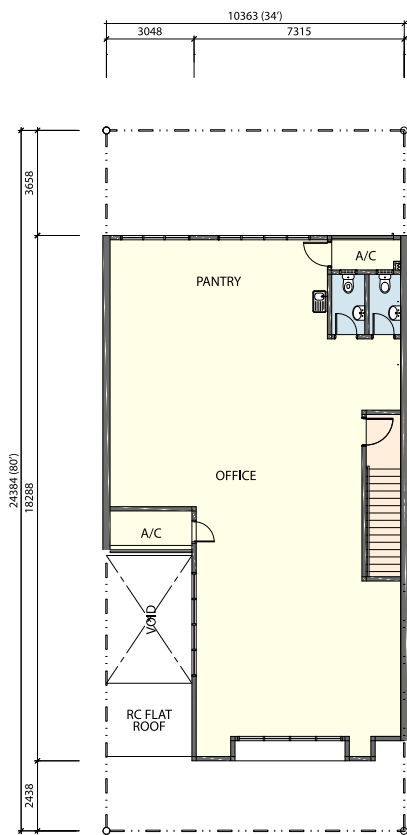
双层店铺办公楼 B型



Artist's Impression



GROUND FLOOR



FIRST FLOOR

3 STOREY
SHOP OFFICES
TYPE B

三层店铺办公楼
B型

LAND AREA

From 57' x 80'

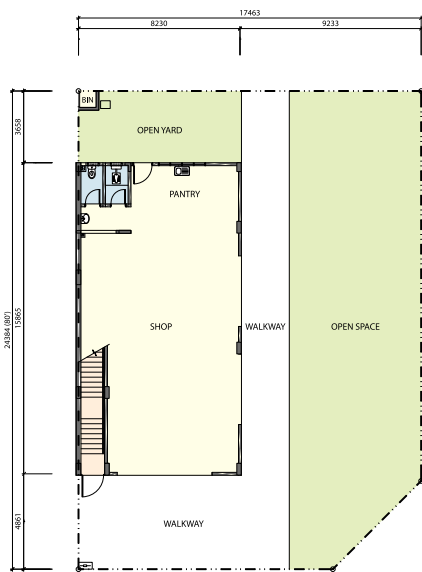
BUILT-UP

From 4,761 sq.ft.

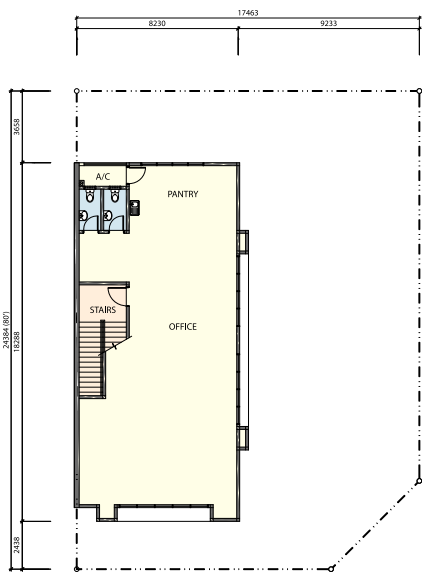
STRUCTURE 结构	Reinforced Concrete Frame 钢筋混凝土结构	
WALL 墙壁	Generally Bricks with Cement Sand Plastering 红砖及抹沙灰	
ROOFING COVERING 屋顶覆盖	Metal Roofing Sheets / Reinforced Concrete Flat Roof 金属屋顶 / 钢筋混凝土屋顶	
ROOF FRAMING 屋顶结构	Lightweight Metal Framing 轻型金属框架	
CEILING 天花板	Skim Coating with Emulsion Painting to Soffit of Concrete Slab 混凝土板片抹灰与乳胶漆 Fibre Cement Ceiling with Emulsion Paint 纤维水泥天花板与乳胶漆	
WINDOWS 窗	Aluminium Framed Glass Windows 铝框玻璃窗	
DOORS 门	Generally Plywood Flush Doors, MS Door/s 三夹板门与软钢门 Aluminium Roller Shutter Door/s 铝制卷帘门 Fire Door/s for Staircase (Except Ground Floor) 楼梯防火门 (底层除外)	
IRONMONGERY 锁	Quality Lock Set 优质门锁与配件	
WALL FINISHES 墙面装饰	External Walls 外墙	Weather Resistant Paint 耐候漆
	Internal Plastered Walls 内墙	Emulsion Paint 墙壁乳胶漆
		Ceramic Tiles to 1500mm high to Bathrooms 浴室的瓷砖高度达 1500 毫米
		Paint on Timber & Steel 油漆于木材和钢材上
FLOOR FINISHES 地面饰材	Ceramic Floor Tiles to Bathrooms 浴室地面瓷砖	
	Cement Render to Others 其它地饰为水泥抹灰	
		Corner Unit 角头单位
SANITARY AND PLUMBING FITTINGS	WC - Pedestal 坐厕	5
卫浴配置	WC - Squatting Pan 蹲厕	1
	Wash Basin with Water Tap 洗手盆及水龙头	5
	Shower Head 花洒	3
	Toilet Roll Holder 卫生纸架	6
	Kitchen Sink with Water Tap 厨房洗涤盆及水龙头	3
	Bib Tap 水龙头	7
ELECTRICAL INSTALLATION	Lighting Point 电灯插座	26
电器配置	13A Power Point 13A电源位	23
	Ceiling Fan Point 天花板风扇位	6
INTERNAL TELEPHONE TRUNKING AND CABLING		
室内电话路线	Telephone Point 电话插座	3

3 STOREY SHOP OFFICES TYPE B

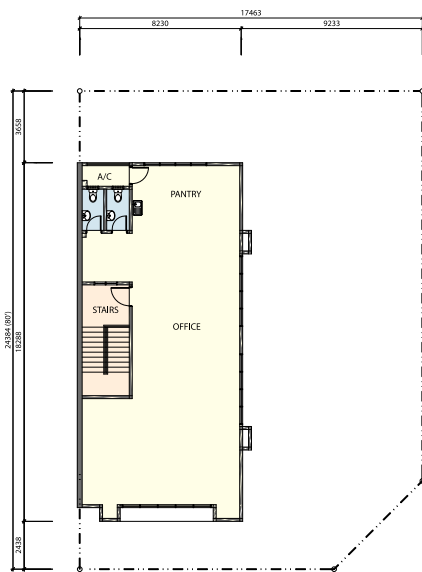
三层店铺办公楼 B型



GROUND FLOOR



FIRST FLOOR



SECOND FLOOR

2 STOREY
SHOP OFFICES
TYPE C

双层店铺办公楼
C型

LAND AREA

From 34' x 80'

BUILT-UP

From 4,020sq.ft.

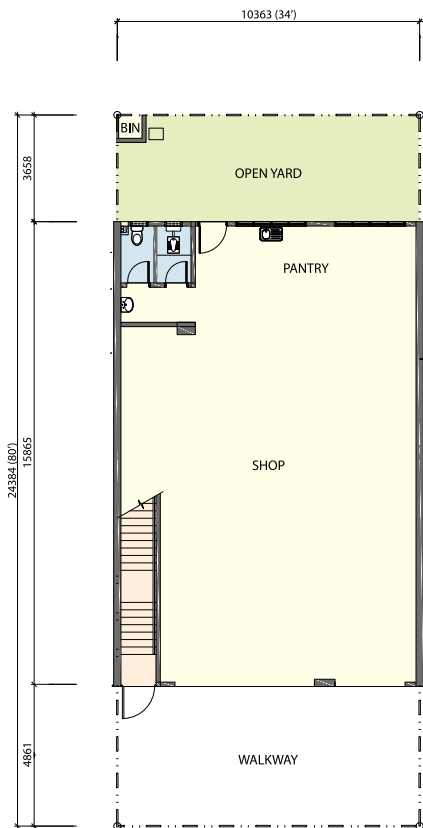
STRUCTURE 结构	Reinforced Concrete Frame 钢筋混凝土结构	
WALL 墙壁	Generally Bricks with Cement Sand Plastering 红砖及抹沙灰	
ROOFING COVERING 屋顶覆盖	Metal Roofing Sheets / Reinforced Concrete Flat Roof 金属屋顶 / 钢筋混凝土屋顶	
ROOF FRAMING 屋顶结构	Lightweight Metal Framing 轻型金属框架	
CEILING 天花板	Skim Coating with Emulsion Painting to Soffit of Concrete Slab 混凝土板片抹灰与乳胶漆 Fibre Cement Ceiling with Emulsion Paint 纤维水泥天花板与乳胶漆	
WINDOWS 窗	Aluminium Framed Glass Windows 铝框玻璃窗	
DOORS 门	Generally Plywood Flush Doors, MS Door/s 三夹板门与软钢门 Aluminium Roller Shutter Door/s 铝制卷帘门 Fire Door/s for Staircase (Except Ground Floor) 楼梯防火门 (底层除外)	
IRONMONGERY 锁	Quality Lock Set 优质门锁与配件	
WALL FINISHES 墙面装饰	External Walls 外墙 Internal Plastered Walls 内墙	Weather Resistant Paint 耐候漆 Emulsion Paint 墙壁乳胶漆 Ceramic Tiles to 1500mm high to Bathrooms 浴室的瓷砖高度达 1500 毫米 Paint on Timber & Steel 油漆于木材和钢材上
FLOOR FINISHES 地面饰材	Ceramic Floor Tiles to Bathrooms 浴室地面瓷砖 Cement Render to Others 其它地饰为水泥抹灰	
Intermediate Unit 中间单位		
SANITARY AND PLUMBING FITTINGS 卫浴配置	WC - Pedestal 坐厕 WC - Squatting Pan 蹲厕 Wash Basin with Water Tap 洗手盆及水龙头 Shower Head 花洒 Toilet Roll Holder 卫生纸架 Kitchen Sink with Water Tap 厨房洗涤盆及水龙头 Bib Tap 水龙头	3 1 3 2 4 2 5
ELECTRICAL INSTALLATION 电器配置	Lighting Point 电灯插座 13A Power Point 13A电源位 Ceiling Fan Point 天花板风扇位	18 16 4
INTERNAL TELEPHONE TRUNKING AND CABLING 室内电话路线	Telephone Point 电话插座	2

2 STOREY SHOP OFFICES TYPE C

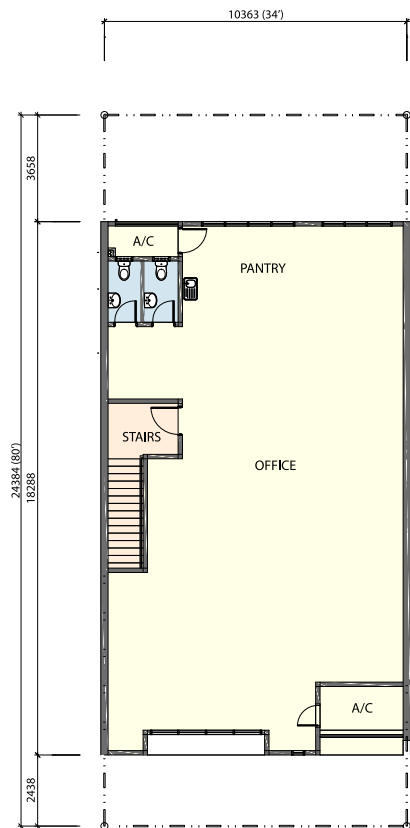
双层店铺办公楼 C型



Artist's Impression



GROUND FLOOR



FIRST FLOOR

Disclaimer: All information, specifications and plans contained herein are subject to amendments as may be required by the authorities or developer's project consultants and cannot form part of an offer or contract. All measurements are approximate and the illustrations are artist's impression only.

3 STOREY
SHOP OFFICES
TYPE C

三层店铺办公楼
C型

LAND AREA

From 36' x 80'

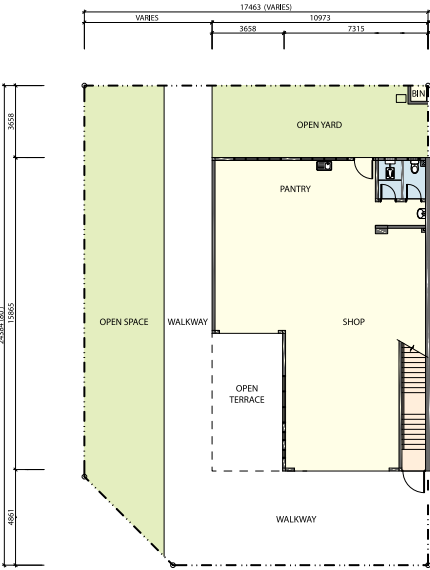
BUILT-UP

From 4,948 sq.ft.

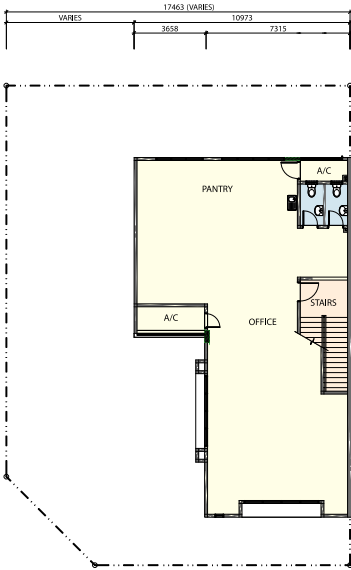
STRUCTURE 结构	Reinforced Concrete Frame 钢筋混凝土结构	
WALL 墙壁	Generally Bricks with Cement Sand Plastering 红砖及抹沙灰	
ROOFING COVERING 屋顶覆盖	Metal Roofing Sheets / Reinforced Concrete Flat Roof 金属屋顶 / 钢筋混凝土屋顶	
ROOF FRAMING 屋顶结构	Lightweight Metal Framing 轻型金属框架	
CEILING 天花板	Skim Coating with Emulsion Painting to Soffit of Concrete Slab 混凝土板片抹灰与乳胶漆 Fibre Cement Ceiling with Emulsion Paint 纤维水泥天花板与乳胶漆	
WINDOWS 窗	Aluminium Framed Glass Windows 铝框玻璃窗	
DOORS 门	Generally Plywood Flush Doors, MS Door/s 三夹板门与软钢门 Aluminium Roller Shutter Door/s 铝制卷帘门 Fire Door/s for Staircase (Except Ground Floor) 楼梯防火门 (底层除外)	
IRONMONGERY 锁	Quality Lock Set 优质门锁与配件	
WALL FINISHES 墙面装饰	External Walls 外墙	Weather Resistant Paint 耐候漆
	Internal Plastered Walls 内墙	Emulsion Paint 墙壁乳胶漆
		Ceramic Tiles to 1500mm high to Bathrooms 浴室的瓷砖高度达 1500 毫米
		Paint on Timber & Steel 油漆于木材和钢材上
FLOOR FINISHES 地面饰材	Ceramic Floor Tiles to Bathrooms 浴室地面瓷砖	
	Cement Render to Others 其它地饰为水泥抹灰	
		Corner 角头 / End Unit 末端单位
SANITARY AND PLUMBING FITTINGS	WC - Pedestal 坐厕	5
卫浴配置	WC - Squatting Pan 蹲厕	1
	Wash Basin with Water Tap 洗手盆及水龙头	5
	Shower Head 花洒	3
	Toilet Roll Holder 卫生纸架	6
	Kitchen Sink with Water Tap 厨房洗涤盆及水龙头	3
	Bib Tap 水龙头	7
ELECTRICAL INSTALLATION	Lighting Point 电灯插座	27
电器配置	13A Power Point 13A电源位	23
	Ceiling Fan Point 天花板风扇位	6
INTERNAL TELEPHONE TRUNKING AND CABLING		
室内电话路线	Telephone Point 电话插座	3

3 STOREY SHOP OFFICES TYPE C

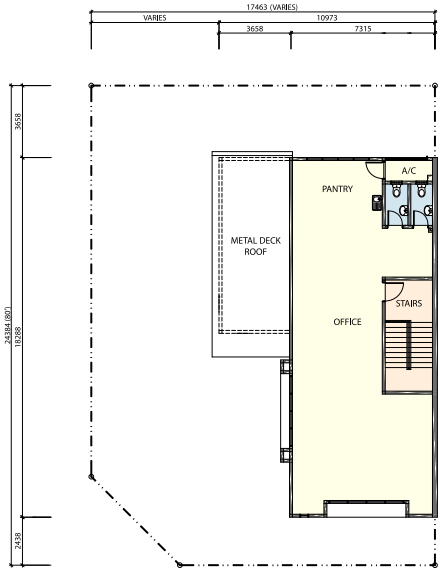
三层店铺办公楼 C型



GROUND FLOOR



FIRST FLOOR



SECOND FLOOR