

TAMAN GAYA

EE

艺
腾
苑

ETON
ESTATES

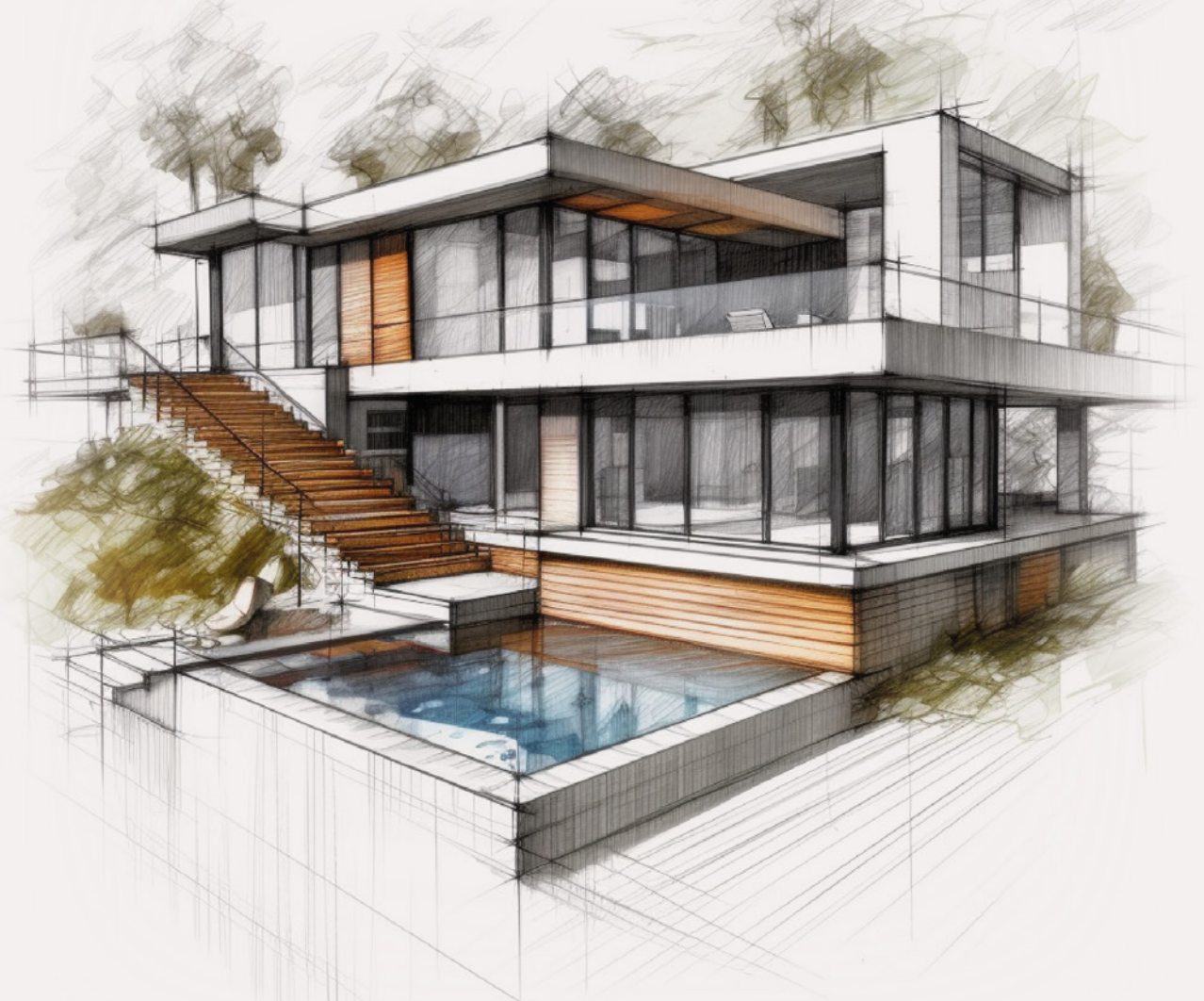
Luxury Real Estate Redefined



EE

艺
腾
苑

ETON
ESTATES

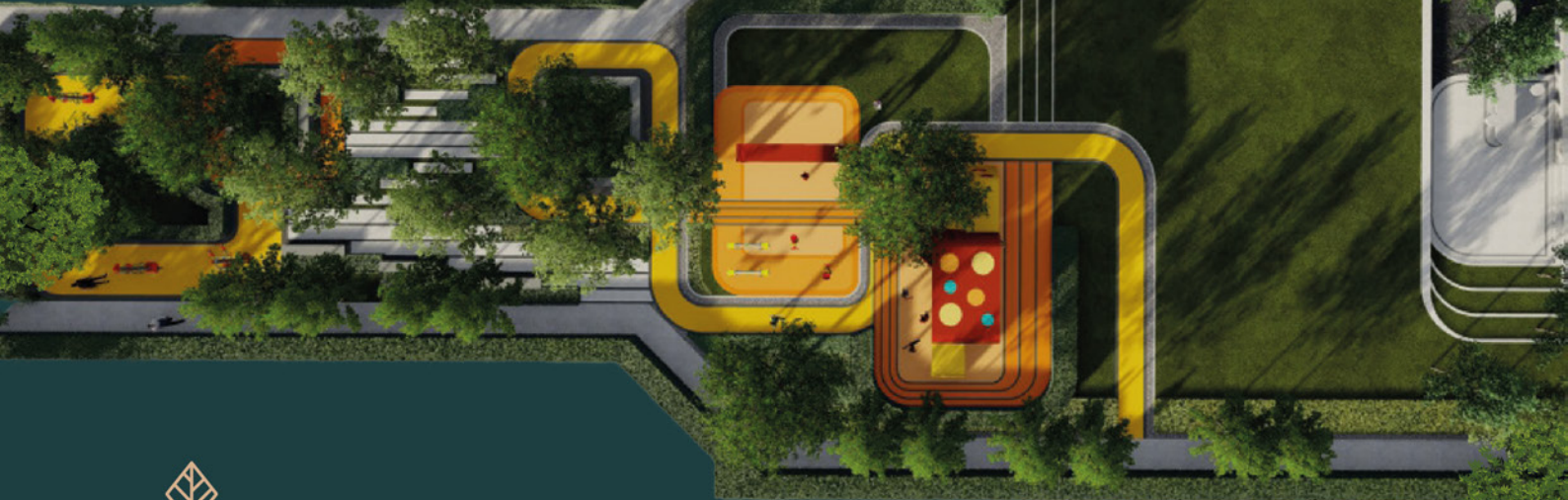


YOUR VISION, YOUR HOME.

Eton Estates offers you the freedom to customize your bungalow design, allowing you to create a space that uniquely reflects your style. Choose layouts, finishes, and details to make your home truly yours. Your bungalow design at Eton Estates reflects your individuality, where every corner tells your story.

This commitment to personalization extends to every aspect of life here. The meticulously designed bungalow is just the beginning. Eton Estates invites you to live life on your terms, where each day embodies your individual vision. This is more than just a house; it's your bespoke dream at Eton Estates.

■
*Eton Estates proudly introduces
47 exceedingly unrivaled
bungalow plots*



LUSH LANDSCAPE

*Eton Estates Unveils Serenity
in Every Corner*

Embrace the serenity of a natural sanctuary. Eton Estates' lush landscapes surround you, providing tranquillity within your dream home.



AMENITIES WITHIN REACH

Your Gateway to Seamless Living

Perfectly positioned, Eton Estates provides direct access to essential amenities—banks, dining, shopping, sports, healthcare, and more—enriching your refined living in our exclusive community.

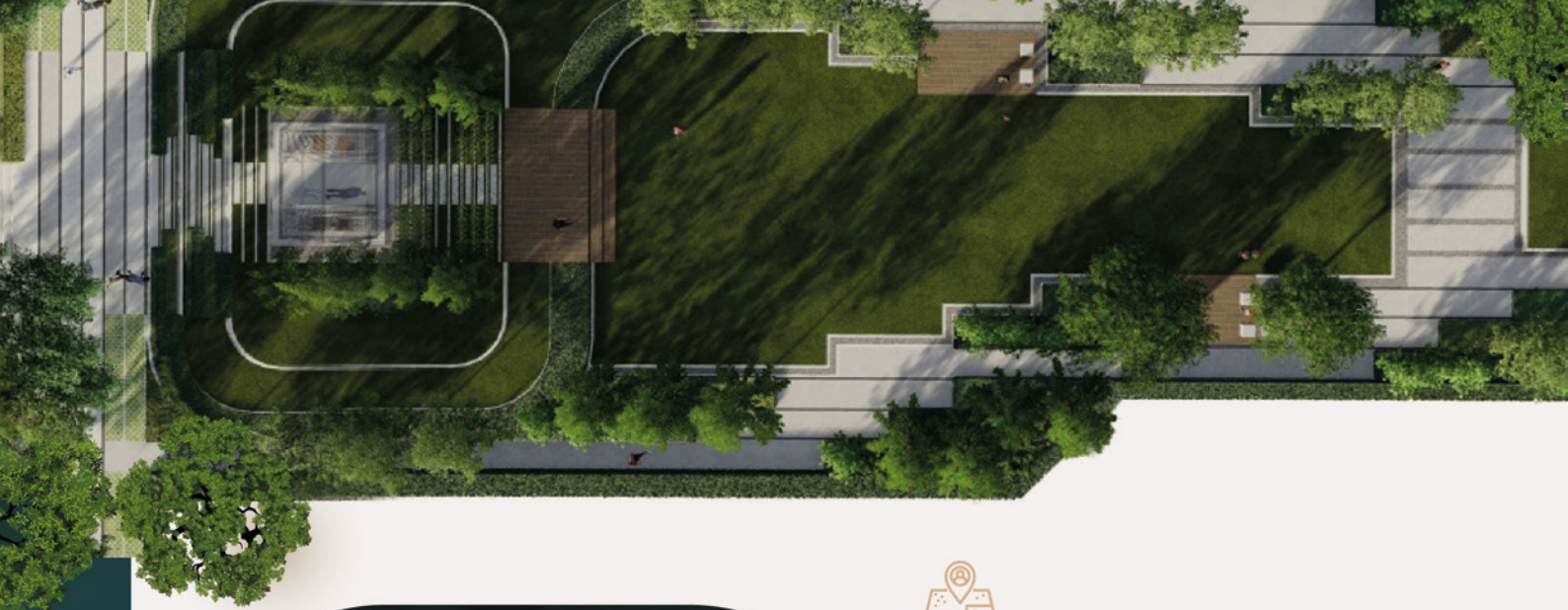


FREEHOLD

*Your Freehold Haven, Where Ownership Knows
No Limits*

Invest for the long term with confidence. Every bungalow plot at Eton Estates is offered as freehold, securing your legacy for generations.





LOW DENSITY LIVING

Space Meets Privacy

Space, privacy, and exclusivity are the hallmarks of our design. Enjoy ample room to breathe and a peaceful atmosphere for your family.



GATED & GUARDED

Your Private Haven, Safeguarded

Security is our priority. Our gated and guarded community ensures your home and loved ones are protected, offering peace of mind.



DEDICATED CENTRAL PARK

Your Oasis in the City

Discover the heart of our community. The central park is a green oasis, a space for leisure, recreation, and outdoor connection to create cherished memories.



REALITY THAT EXCEEDS YOUR EXPECTATIONS.

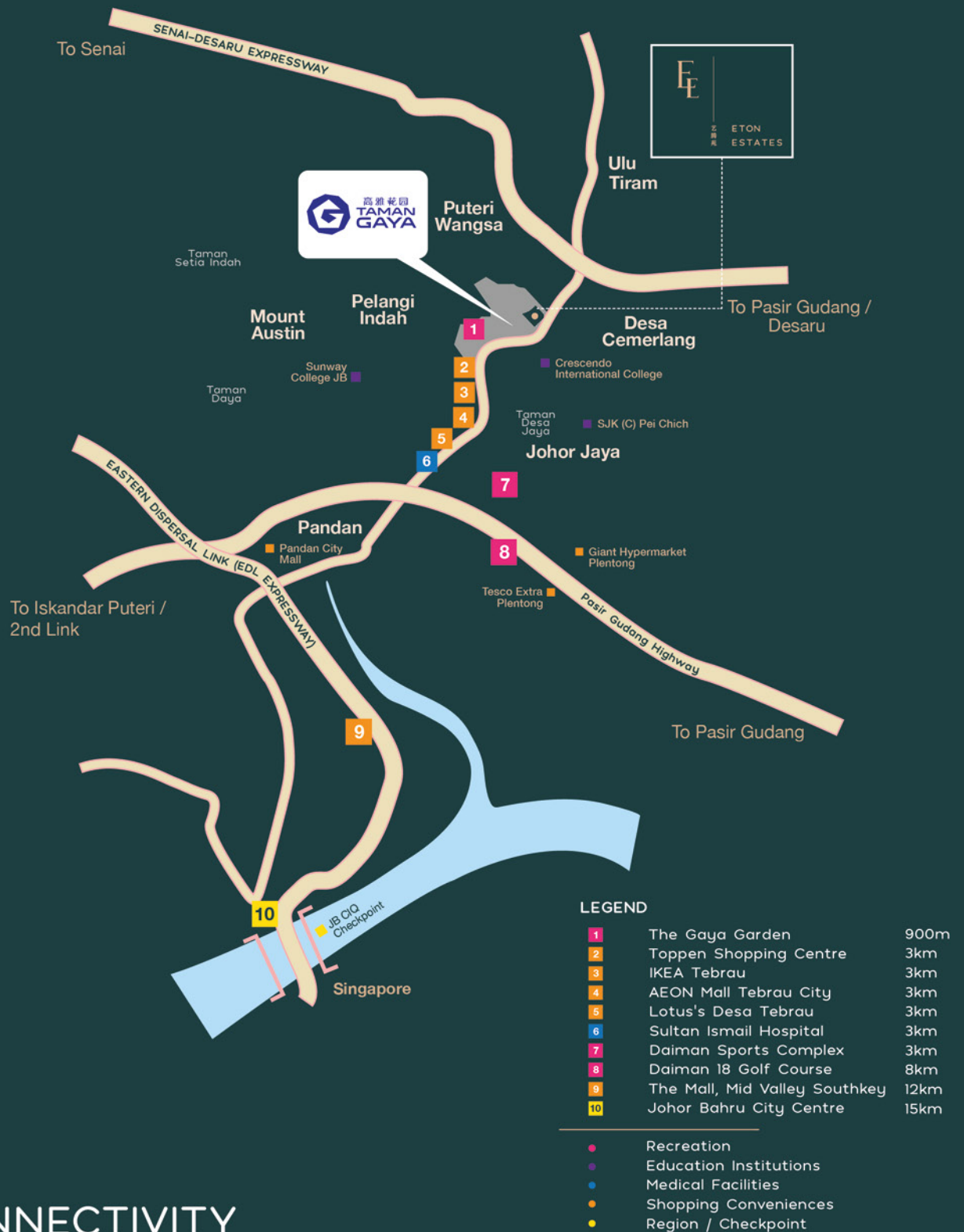
Immerse yourself in the serene oasis of Eton Estates, where exclusive bungalow plots are enveloped by a lush, 1-acre central park. More than just a scenic backdrop, this meticulously landscaped sanctuary seamlessly integrates with daily life, enhancing your luxurious living experience.

With 16.5% of the development dedicated to greenery and a low-density design, the central park becomes more than an amenity—it's a sanctuary. Step into Eton Estates, where your luxurious living experience is defined by a commitment to a harmonious balance between modern living and natural tranquility.

EXCLUSIVE PLOTS OF BUNGALOW LAND



The information contained in this material is subject to change and cannot form part of an offer or contract. All renderings are artist's impressions only. All measurements are approximate. While every reasonable care has been taken in proving the contained. The developer cannot be held responsible for any inaccuracy. All the above items are subject to variations, modification and substitutions as may be required or recommended by the architect or engineer.



CONNECTIVITY

Situated in a well-connected neighborhood, Eton Estates offers proximity to a range of key destinations, providing daily convenience and a well-rounded lifestyle. With easy access to the Senai-Desaru Highway and Tebrau Highway, commuting to and from your residence is effortlessly woven into your living experience at Eton Estates.

CULTIVATING TRUST AND BUILDING DREAMS SINCE 1972

Daiman Group, a trusted name for over five decades, is synonymous with integrity, reliability, and excellence in Johor. Pioneering projects like Taman Sri Tebrau reflect our commitment to quality and innovation. With a diverse portfolio spanning residential, sports, hospitality, and more, we shape thriving communities and nurture the next generation.

Join us on a journey of excellence, where tradition meets innovation, and history paves the way for a brighter future. Our dedication to quality, timely delivery, and adherence to industry standards has earned us the trust and support of our customers. As we continue to define the landscape of real estate development, property investment, and hospitality, we remain committed to exceeding expectations and making meaningful contributions to our communities.



Main Office

Level 32, Menara Landmark, No.12 Jalan Ngee Heng,
80000 Johor Bahru, Johor Darul Ta'zim, West Malaysia.
T: 07-225 5888 F: 07-225 5999 E: daiman@daiman.com.my

Atlantic Dynamics Sdn. Bhd. (Reg No. 199001005889)197458-P)

No.2, Jalan Tegap 1, Taman Gaya, 81800 Ulu Tiram,
Johor Darul Ta'zim, West Malaysia.
T: 07-862 8111/8777 F: 07-862 8555 E: gayasales@daiman.com.my